

Health & Risk Management for Aging Society

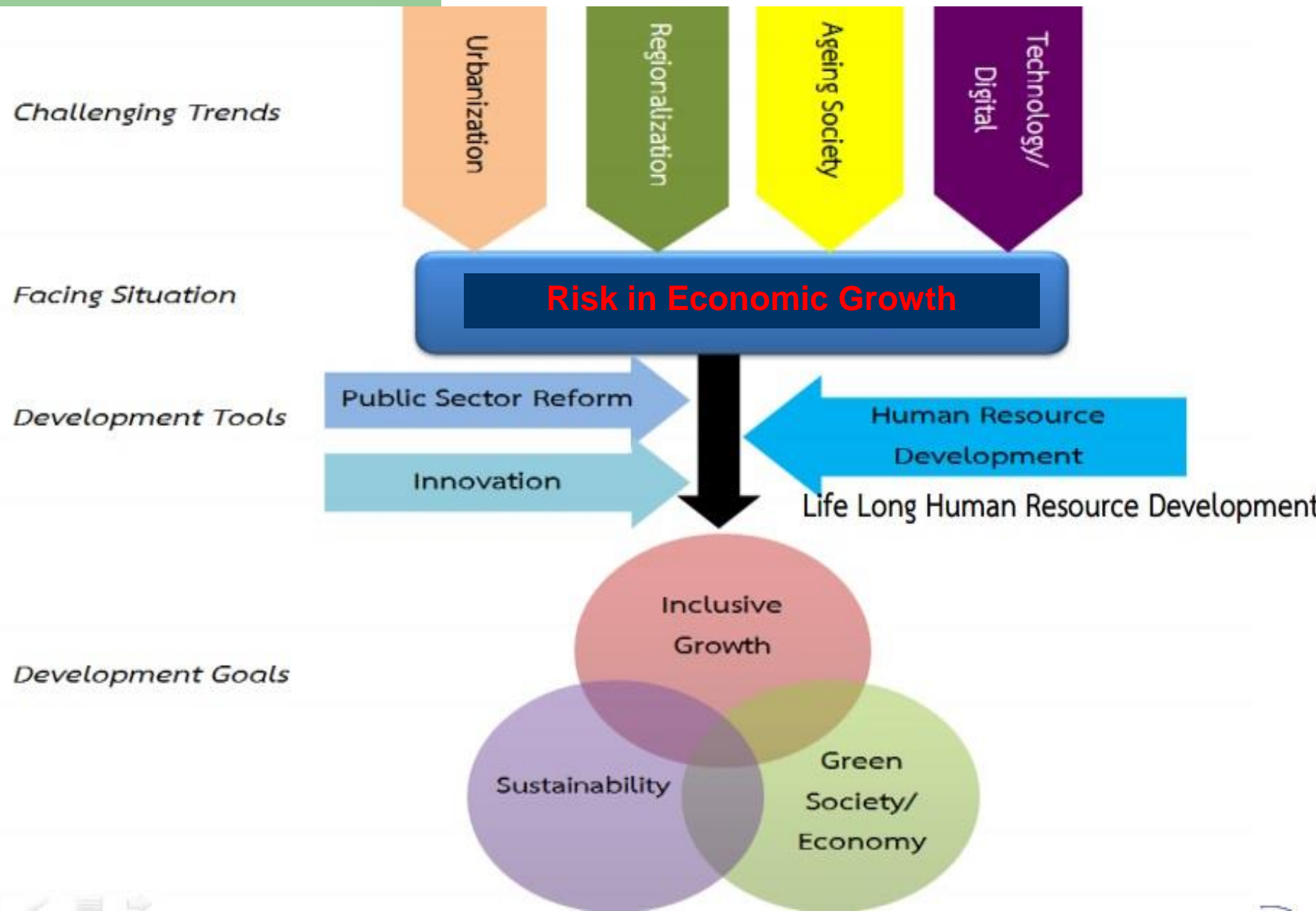


Sang-arun Isaramalai, PhD, APN-NP
Prince of Songkla University, THAILAND



สถาบันวิจัยระบบการดูแลผู้สูงอายุไทย
Research Center for Caring System of Thai Elderly
คณะพยาบาลศาสตร์ มหาวิทยาลัยสงขลานครินทร์

OUR Common Issues

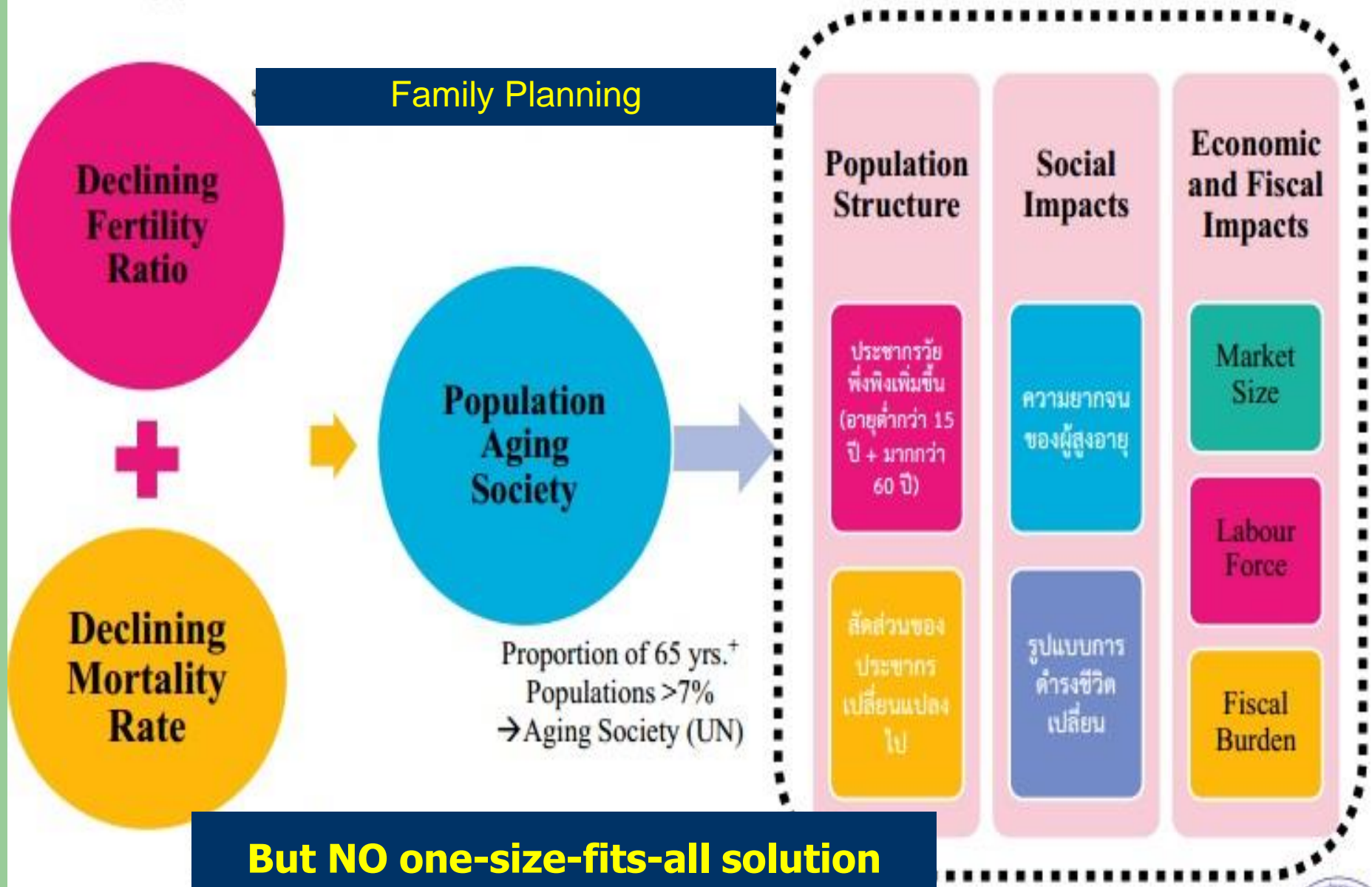


Aging Perspectives



Positive	Active aging Healthy aging Successful aging	Participation Autonomy Independence Security Positive attitude
Negative	Frail aging	Disability Ineffective coping Vulnerability

We shared ...in common problem



Who should care for?



The Elderly ?



Family ?



Community ?

Government ?



Needed Research??

Challenges in Aging Society

Urbanization

Regionalization

Technology and Digital

Challenges in Aging Society

Active Aging
Human Capital
(education, health, and social norms)
Fertility ratio
Labor market
Long Term Care
Social protection spending

Urbanization

Family Strengthening

Social Cohesion

Community Engagement

Regionalization

Infrastructure Fund

Venture Capital

Logistics

Technology and Digital



Lease Capital

Entrepreneurship

Innovative Eco-system

Proposed Research Agenda

- Social welfare & facilities
- Labor market & Occupational health
- Primary care/ Home care/Long term care/
- Hospice/ Palliative care
- Active Aging/Health Promotion/Self-care
- Maternal Health & welfare/ Child care
- Education-Social norms

Thank you for your attention

